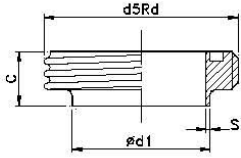
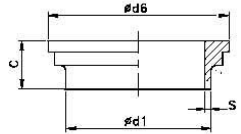




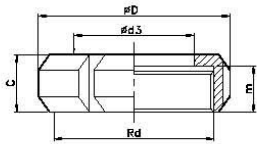
>> UNIONS SMS



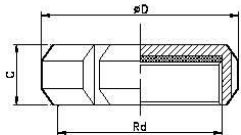
WELDING MALE SMS  
FIG.1611



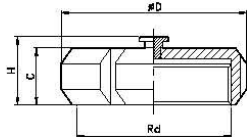
WELDING LINER SMS  
FIG.1612



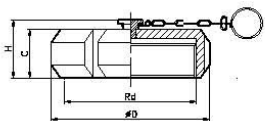
NUT SMS  
FIG.1603



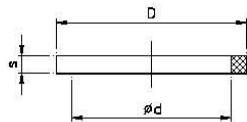
BLIND NUT SMS  
FIG.1623



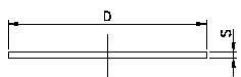
BLIND NUT WITH BOSS  
FIG.1624



BLIND NUT COMPLET  
FIG.1625



UNION SEAL SMS  
FIG.1608



NUT SEAL  
FIG.1629



WELDING UNION SMS

DN	d5Rd	d1	C	S	AISI 316L
25	40x1/6"	25	19	1,25	21611026
38	60x1/6"	38	23	1,25	21611039
51	70x1/6"	51	23	1,25	21611052
63,5	85x1/6"	63,5	27	1,5	21611063
76	98x1/6"	76,1	27	1,6	21611077
104	125x1/4"	104	30	2	21611104

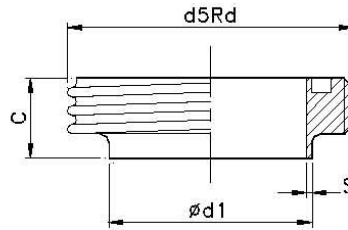


Fig.1611

WELDING LINER SMS

DN	d6	d1	C	S	AISI 316L
25	35,5	25	15	1,5	21612026
38	55	38	20	1,5	21612039
51	65	51	20	1,5	21612052
63,5	80	63,5	24	1,5	21612063
76	93	76,1	24	2	21612077
104	118	104	30	2	21612104

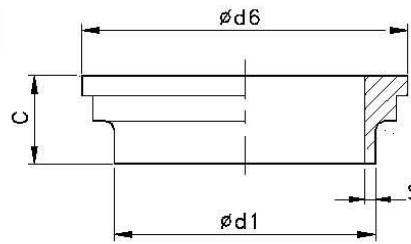


Fig.1612

NUT SMS

DN	D	d3	Rd	C	m	AISI 304L
25	51	32	40x1/6"	20	16	1603025
38	74	48	60x1/6"	25	21	1603038
51	84	61	70x1/6"	26	21	1603051
63,5	100	74	85x1/6"	30	25	1603063
76	114	87	98x1/6"	32	26	1603076
104	140	113	125x1/4"	32	26	1603104

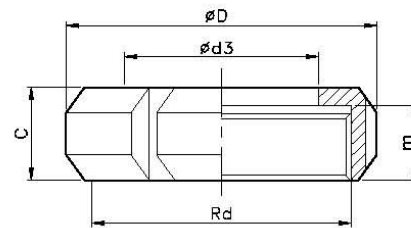
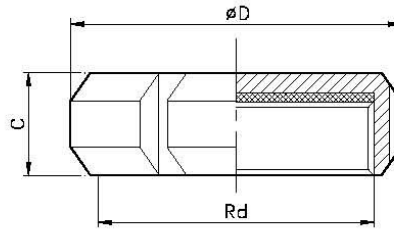


Fig.1603



**BLIND NUT SMS**

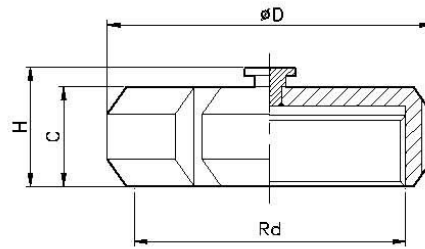
DN	D	Rd	C	AISI 304L
25	51	40x1/6"	20	1623025
38	74	60x1/6"	25	1623038
51	84	70x1/6"	26	1623051
63,5	100	85x1/6"	30	1623063
76	114	98x1/6"	32	1623076
104	140	125x1/4"	32	1623104



**Fig.1623**

**BLIND NUT WITH BOSS SMS**

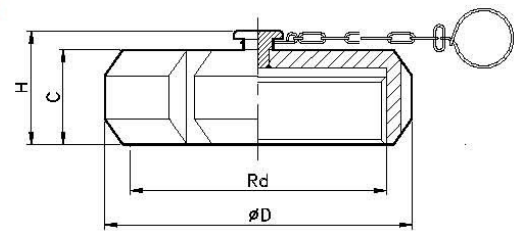
DN	Rd	D	C	H	AISI 304L
25	40x1/6"	51	20	27	1624025
38	60x1/6"	74	25	32	1624038
51	70x1/6"	84	26	33	1624051
63,5	85x1/6"	100	30	37	1624063
76	98x1/6"	114	32	39	1624076
104	125x1/4"	140	32	39	1624104



**Fig.1624**

**BLIND NUT COMPLET**

DN	Rd	D	C	H	AISI 304L	Cadena AISI 304L
25	40x1/6"	51	20	27	1625025	1027025
38	60x1/6"	74	25	32	1625038	1027040
		84	26	33	1625051	1027050
63,5	85x1/6"	100	30	37	1625063	1027065
76	98x1/6"	114	32	39	1625076	1027080
104	125x1/4"	140	32	39	1625104	10270100



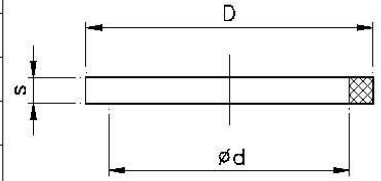
**Fig.1625**



**>> UNIONS SMS**

**UNION SEAL SMS**

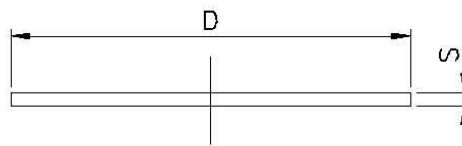
DN	D	d	S	EPDM	NBR	FPM	MVQ
25	32	25	5,5	1608025	1607025	1606025	1604025
38	48	38	5,5	1608038	1607038	1606038	1604038
51	61	51	5,5	1608051	1607051	1606051	1604051
63,5	73,5	63,5	5,5	1608063	1607063	1606063	1604063
76	86	76	5,5	1608076	1607076	1606076	1604076
104	116	104	5,5	1608104	1607104	1606104	1604104



**Fig.1608**

**NUT SEAL**

DN	D	S	EPDM
25	40	3	1629025E
38	60	3	1629038E
51	70	3	1629051E
63,5	85	3	1629063E
76	98	3	1629076E
104	125	3	1629104E



**Fig.1629**